



SAMPLE REPORT

Dmystifi Career Guidance

About The Report	3
Interest Analysis	5
Personality Analysis	8
Aptitude Analysis	15
Thank You	25

SAMPLE REPORT

About Career Recommendation Report

Career Guidance is a comprehensive tool that builds a psychometric model based on your interests, strengths, skills and abilities and provides insight into work environments and occupations. The career indicator guides an individual to acquire knowledge, information and identifies the best suited career options and courses after 12th with a list of professions that fit your career personality.

Dmystifi Career Guidance is a pathway for students to identify best courses after 12th or higher education to choose any course without a state of confusion. Career Guidance is a 3-dimensional assessment tool based on your Career Clusters, Temperament Indicator and Aptitude.

Career Cluster Inventory

Career Cluster Inventory is the first step in planning a career to identify your possible career options. Career Cluster categorizes an individual's interest and personality on the basis of 16 Career Clusters - Agriculture, Food, and Natural Resources, Architecture and Construction, Arts, Audio/Video Technology, and Communications, Management, and Administration, Business, Education and Training, Finance, Government and Public Administration, Health Science, Hospitality and Tourism, Human Services, Information Technology, Law, Public Safety, Corrections, and Security, Manufacturing, Marketing, Sales, and Service, Science, Technology, Engineering, and Mathematics and Transportation, Distribution, and Logistics to compare your career options with the best suited occupations or professions.

It is an assessment tool to plan your career in a stepwise solution along with deeply researched career opportunities to shape your future in a better way.

Myers Briggs Type Indicator

Myers Briggs Type Indicator is a career assessment instrument and used as a tool to learn about an individual personality type. It is component of a complete career self-assessment that assesses interests, aptitudes, reactions, values, motivations, skills and work-related values and helps people to choose the right career.

Myers Briggs identified four dichotomies with basic preferences - Extraversion (E) or Introversion (I), Sensing (S) or Intuition (N), Thinking (T) or Feeling (F) and Judging (J) or Perceiving (P) and 16 personality types that result from the interactions among the preferences. It helps an individual to decipher the different ways they prefer to use their perception and judgment including things, people, happenings, or ideas and conclusions about what has been perceived.

Aptitude Career Assessment

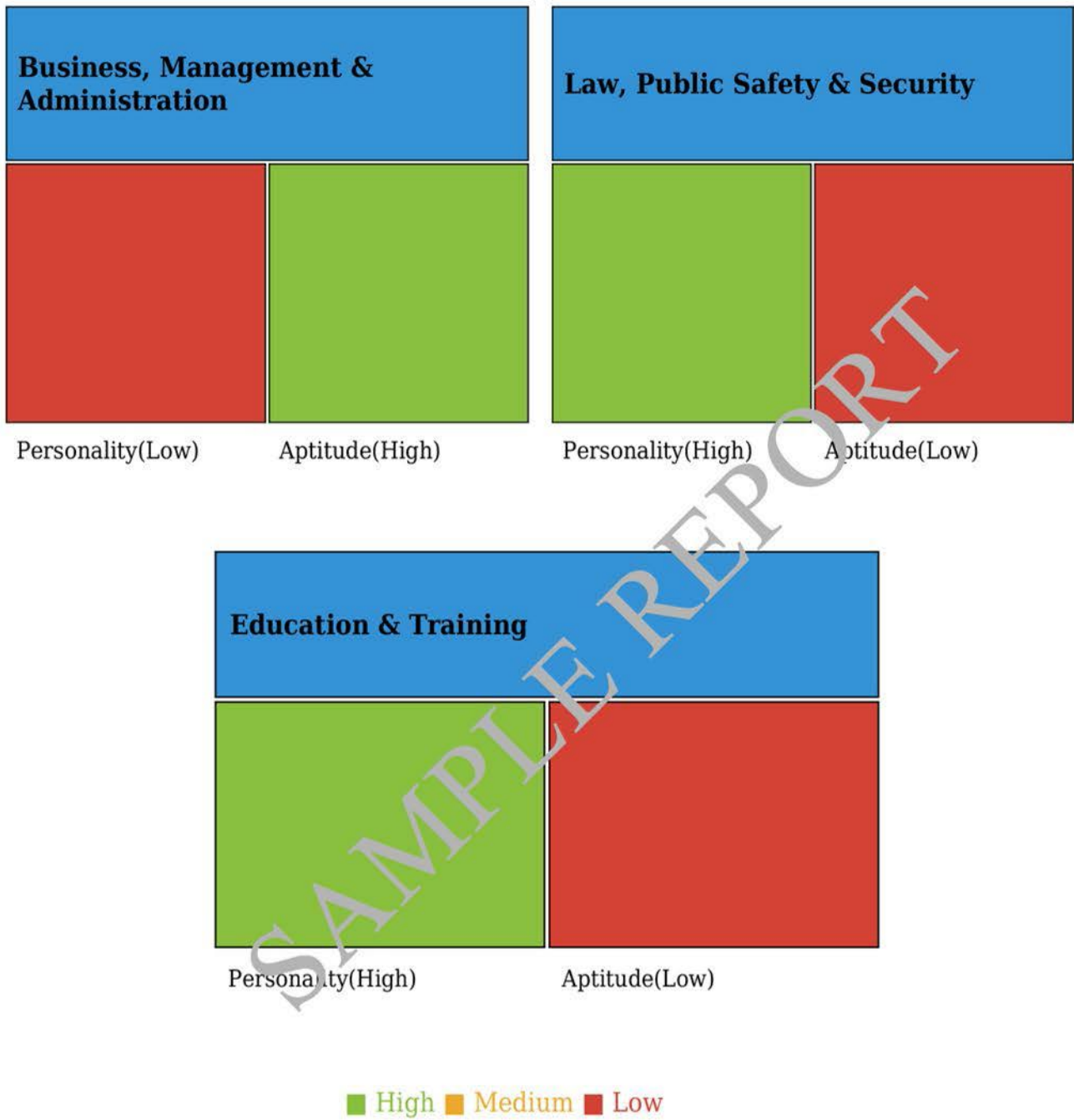
Aptitude Career assessment helps you to gain insight into the careers that best fit your aptitude levels. This assessment tool evaluates your interests, abilities, career values and preferred work environments in order to find matches that will lead to satisfying careers.

Test Outcomes

The Dmystifi career assessment report helps you identify your passions and interest and make it easy to have more informed decisions regarding what career path you should choose. The report works as an important tool for students of class 12 and reveals a number of excellent professions based on their personality traits, skills, values, passions, and interests.

The Dmystifi career self-assessment plots a scale of career paths with specific traits and abilities to perform efficiently in your occupational and social environment.

Vansh Kaul's Career Cluster Map





Your Interest!

SAMPLE REPORT



Business, Management & Administration

Business, management and administration workers plan and manage their day-to-day operations well enough. People like you prefer to work indoors and keep good track of details and operate things smoothly. They have excellent communications skills and are seen as problem solvers.

Business, management and administration cluster falls in the category of planning, organizing and directing business operations.

Your **Dmystifi career** shows interest in various aspects of business including business plans, creating and promoting business goals, identity and products and tending to all of the administrative and information needs of the business.

Law, Public Safety & Security

Law, public safety, corrections, and security workers provide legal and protective services. They deal with the creation, enforcement and application of laws and regulations. They work indoors as well as outdoors. People like you deliver services that make others feel a little safer during crisis.

Law, public safety, corrections, and security cluster falls in the category of enforcement of laws and the protection of public.

Your **Dmystifi career** shows interest in various aspects of legal, protective, professional and technical support services including responsibilities of police, courts, corrections, private security, and protective agencies of fire and emergency services.

Education & Training

Education and Training workers are extremely good in guiding people. They prefer to work indoors and are inclined towards teaching children and adults to develop a new knowledge or skill.

They have good management skills and conduct testing and research to make improvements or changes in education. People like you are interested in planning, managing, and providing education and training services and have a strong knowledge of their subject area with excellent communication skills and a desire to help others.

Education and Training falls in the category of management, counselling, and providing instructions or support to others.

Your **Dmystifi career** shows interest in various aspects of education and training including developing curriculum, supervising teachers, or managing large school districts or training programs.

Your Personality!

SAMPLE REPORT



INFP
DREAMER



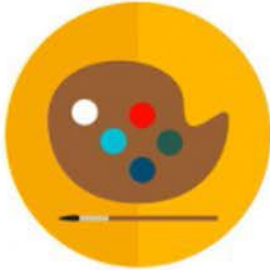
ESFJ
SUPPORTER



ESFP
ENTERTAINER



ISFJ
DEFENDER



ISFP
ARTIST



ESTJ
OVERSEER



ESTP
PERSUADER



ISTJ
EXAMINER



ISTP
CRAFTSMAN



INTJ
STRATEGIST



INFJ
CONFIDANT



ENTJ
CHIEF



ENTP
ORIGINATOR



ENFJ
MENTOR



INTP
ENGINEER



ENFP
ADVOCATE

Your Summary Code

I S F P

Introverts Sensitive Feeler Perceiving

You are true artists who make use of aesthetics, design and even your choices and actions to push the limits of social convention. You live in a colorful world and are inspired by connections with people and ideas.

Your internal mode is where you deal with things according to how you feel about them, or how they fit with your value system and external is where you take things in from five senses in a literal, concrete fashion.

You tend to have open mind, approaching life, new experiences, and are person with grounded warmth. Your ability to stay in the moment helps you to uncover exciting potentials.

You live in the world of sensational possibilities. You are keenly in tune with the way things look, taste, sound, feel and smell. You have a strong aesthetic appreciation for art and are gifted at creating and composing things which will strongly affect the senses.

You tend to be quiet and reserved, and difficult to get to know well. You hold back your ideas and opinions except from those who you are closest to basically you are secretive. You are likely to be kind, gentle and sensitive in your dealings with others.

You show interest in contributing to one's sense of well-being and happiness, and put a great deal of effort and energy into tasks.

You are extremely perspective and aware about others. You constantly gather specific information about people, and seek to discover what it means. You usually have the right perceptions of others.

You are action-oriented individual and learn best in a "hands-on" environment and may become easily bored with the traditional teaching methods. Idea of making decisions based strictly on logic makes you uncomfortable.

You are a warm and sympathetic human who cares about people, and are strongly service-oriented in you desire to please. You show your love through actions rather than words.

You have no desire to lead or control others. You need space and time alone to evaluate the circumstances of your life against your value system and respect other people's needs for the same. Your strong value systems can lead you to be intensely perfectionist, and cause them to judge yourself with unnecessary harshness.

Charming

You are always relaxed and warm. You have an attitude of "live and let live" which naturally makes you likable and popular.

EPS 10

Sensitive to others

You can easily relate to other's emotions, helping you to establish harmony and good will, and minimize conflict.

Imaginative

As you are so aware of other's emotions, you use your creativity and insight to craft bold ideas that speak to people's hearts. Somehow, this vivid imagination and exploratory spirit helps you in unexpected ways.

Passionate

You are quiet and shy at heart. When you are caught up in something exciting and interesting, you can leave everything else in the dust.

Curious

Your ideas are well and good, but you need to see and explore yourself. Work related to science may seem a poor match for you. But boldly artistic and humanistic vision is often exactly what you should do according to research.

Artistic

You are very creative. You are able to show your creativity in tangible ways and with stunning beauty and have a way of visualizing things that resonates with your value.

Fiercely independent

Freedom of expression is your top priority. Anything that interferes with this, like traditions and hard rules, creates a sense of for you. This can make more rigidly structured academics and work a challenge.

Unpredictable

You don't like long-term commitments and plans. The tendency to actively avoid planning for the future can cause you a lot of problems. This can cause tension in your romantic relationships and financial hardship later in life.

Easily stressed

You live in present, full of emotion. When situations get out of control you lose your charm and creativity in favor of gnashing teeth.

Overly competitive

You can escalate small things into intense competitions, turning down long-term success into your search of glory in the moment. You tend to get very unhappy when you lose.

Fluctuating self-esteem

People demand for quantified skills, but that's hard with your strengths of sensitivity and artistry. Your efforts are often dismissed and turn out to be a hurtful and damaging blow, especially early in life.

Personal Growth

You can achieve personal growth through actions such as learning how to express disagreement or criticism in a constructive way, making and implementing detailed plans, or giving direct instructions when it is appropriate to do so.

You also need to learn to be more open about your personal values, so it is less of a surprise when colleagues infringe them, and establish a long term goal to work towards.



Communication style

You are gentle and encouraging communicator who enjoys exploring options and ideas. You envision possibilities for people and are often good at coming up with creative, flexible solutions to problems.

You are typically an attentive listener who tries to adapt communication style to the people you are dealing with. Compassionate and cooperative, you tend to be appreciative of other people and their ideas, although you may be reserved about sharing your own closely held values and ideas with people you are not familiar with.



Friendship

In friendship, you can be very comfortable with people around. The here-and-now is what's important for you, your life, as you love spending time with your friends by doing casual and fun activities.

You believe in actions, not words. You talk about what is, not what could, should or will be, and then you actually do it. This passion for action is a blessing for you since it helps them get past their shyness in meeting new people. You are sensitive and it takes time to build enough trust with new friends to open up and feel natural.

Those who prefer safe, structured environments might end up struggling in these friendships with you, especially if someone lectures you on how you're living your life. As with any criticism, your friends are free to do their own thing, and to leave to do yours.

If your friends keep things supportive and easy-going, you serve them with warmth and laughter. When you are with your trustworthy friends, you relax and enjoy to the fullest.

Work Environment

In the workplace, you seek out positions that give you as much room as possible to do things your own way. You are spontaneous, charming, and genuinely fun person to be around. You wait for a chance to express your natural qualities, and to know that your efforts are appreciated.

You don't like to be controlled, and this can be quite clear in subordinate positions, you loathe being micromanaged. At the same time, you aren't well-known for your long-term focus, but rather for adaptability and spontaneity.

You are humble, even shy, and unlikely put yourself on the spot by volunteering your help. But you love getting appreciated and if assigned a task, you work hard to earn that appreciation.

You feel comfortable among your peers. Working with equals and giving some advice to solve practical problems is your type of environment. At the end of the day, you can become sensitive and need to know that your efforts are appreciated. You sometimes let your personal goals affect your work, which can make you a little unpredictable, but this is balanced by your desire for harmony and willingness to find win-win solutions whenever possible.

You take no joy in controlling others, planning long-term goals, or disciplining unsatisfactory behavior. Your sensitivity allows you to be great listener. You prefer to give your subordinates the freedom to do what needs to be done. This gives you a marked style of inspiration and cooperation.

Your Aptitude

SAMPLE REPORT

Score	1	2	3	4	5
Vocabulary			▲		
Verbal Reasoning		▲			
Sequential		▲			
Arithmetic Reasoning		▲			
Analytical Reasoning	▲				



Vansh Kaul has obtained a total raw score of 29 out of 52 on Vocabulary test.

This indicates Vansh Kaul has a rich and a strong vocabulary base. You seem to excel in areas that require comprehension and communication skills. You clearly understand the meaning behind words and deal with complicated ones effectively.

People like Vansh Kaul use language in an exact and appropriate manner and are also extremely good in dealing with or reviewing the incorrect use of language and making it free from grammatical mistakes.

Vansh Kaul must be a deep thinker and an excellent communicator. You seem to be clear about your ideas, thoughts and emotions and can articulate these well to the people around you. Therefore, you would be equipped with good expression and confidence.

You display good vocabulary skills which enable you to get your message across more efficiently, add richness to your speech, and deliver what people are exactly looking for without any vague explanations.

People with strong vocabulary are extremely good with public speaking skills and can easily convince others during an argument. They can concisely and clearly express complex issues when encountered in a debate or a presentation. People with good vocabulary skills articulate their vision in a powerful manner and mostly fall in the category of great leaders.

SAMPLE REPORT

Use New Words

Try to use or slip in a new word into a conversation, a journal entry, an assignment or an email to a friend. Do this as often as possible and repeat it to yourself.

Keep a thesaurus and use it when you find yourself using a word too often. This will help you express yourself, and learn a new word in the process.

Read Every Day

Read a well-written and edited essay, magazine article, book or news article almost every day. This will quickly teach you new ways to think and speak with words you may be unfamiliar with.

Diversify Your Reading List

Expose yourself to a wide range of vocabulary. Diversify the topics you read including natural science, politics, history, philosophy or any other topics you enjoy reading.

Word puzzles and Games

Word puzzles in the newspaper or a magazine are perfect way to boost your working vocabulary. Crossword puzzles help you move words from your memory banks into your working set of vocabulary which will come across in your writing.

Try downloading fun word games to get some practice on your vocabulary skills. Some games are designed to build or practice spelling, phonics, and even typing skills.

Take a Writing Course

Look for an online course to boost your writing vocabulary and learn how to use new words correctly. Try to find a self-paced course to increase fluency and brush up on your writing skills. Some classes work towards essay writing or creative writing, so find classes that will help you improve your style.

- **Reading**

Reading is the best way to improve your verbal ability. Read outside your comfort zone to encounter a range of new words. This will lift your verbal ability but do remember to put them into practice.

- **Learn a new word everyday**

Subscribe to online websites or download applications that deliver a new word every day. This will help build up a stronger vocabulary and will boost your verbal ability. Try and incorporate the new words or phrases into discussions with others.

- **Keep a journal**

Journaling is an excellent way to keep track of new learning. Note down any new words that you come across and try and use those in real life. This can help increase the knowledge of words substantially.

- **Look for the grammatical mistakes**

Work on your grammar with some online grammar-related sites to learn common grammar mistakes

and work to address those mistakes.

- **Play word games**

Play word games, Online or Offline, such as Scrabble and spend time mastering those games. This is an excellent verbal ability booster as it requires problem-solving skills as well as a good vocabulary.

- **Read a quality newspaper**

Reading newspaper daily challenges your comprehension and vocabulary in a productive way. Remember things you've read and understand specificities relating to current events, and use them in your daily life.

Here are the ways you can develop your sequential reasoning skills even more in almost every aspect of your life.

Express Yourself

Make sure to have visible plans, schedules, and explanations for the people you work with.

You should take time to share your thought process with others. This will build their confidence in your plan or idea.

Jot down your Ideas

When working on a large project or may be wiring an essay take out time to collect your thoughts and write down your ideas on a paper before you begin with something. It would always be beneficial to provide explanations about your project or assignment.

People like you are gifted with an organized thought process. Therefore, should work on writing with clarity and have logical communications with others.

Be a part of group projects

Participate in group projects or volunteer to coordinate the details of a specific part of a project when working in a group. This will allow you with an opportunity to focus your attention on one essential aspect of a group project.

Following are some of the recommendations to develop your arithmetic skills in almost every other aspect of your life.

- **Start With Easy Calculation**

Start with small and easy calculation and take complicated ones later. Record the timings take to solve the calculations and try and improve that timing.

- **Learn Tricks**

Make use of tables or patterns while solving problems. Practice these patterns on table and use them randomly.

- **Write down calculation**

Whether you do the calculation in your mind or use some trick, always try to write down the calculations. This will make your problem easy.

16-Oct-2020

- **Game**

Gaming is an excellent way to improve calculation skills. Play games such as chess where one make the decision based on the number of moves you think ahead.

- **Math applications**

Math applications are another source to enhance your calculation skills. Try some online calculation application to help improve your skill.

Here are the ways you can develop your analytical skills in almost every other aspect of your life.

- **Read more frequently**

The best way to expand your analytical skills is through the power of the written word. The more you expose yourself to different ideas, the more you'll increase your own cognitive abilities.

When reading a book, magazine or article, think about the overall plot and other possible scenarios. This will stimulate thinking process and broaden your imagination.

- **Play brain games**

Games like Sudoku, chess and Scrabble will help expand your critical thinking. This can also increase your mental stimulation and improve your analytical skills.

- **Surround yourself with different personalities**

Try to surround yourself with people with whom you don't normally socialize. They are the ones who will spark your imagination and offer you a new and different perspective. You can start by attending networking events and engage with everyone you meet there.

- **Keep a journal**

Keeping a diary will help you to reflect on your day. This forces you to analyze your actions and learn from any triumphs or mistakes

- **Ask questions**

Curiosity drives us to be more motivated and creative. The questions that we ask ourselves encourage us to pursue different methods and force us come to logical solutions.

So, don't be afraid to ask questions. The more knowledge you soak up, the better your analytical skills will become.

- **Be observant**

Focus on getting things done quickly rather than slowing down and focus on the details. But you should take time to watch how others behave. The key to increase your analytical skills is to constantly challenge yourself to learn more. This gives an ability to comprehend and appreciate debates and concepts, break down complex information and streamline solution-finding processes.

Your **Dmystifi career profile** includes everything related to planning and managing business operations. There are six career pathways in this cluster. Each pathway has unique set of skills and competencies.

Administrative and Information Support Career Path

This pathway is responsible for the day-to-day duties in a business. It ensures the information moves throughout from one place to another in an efficient and timely manner for the business.

Pathway

- Office administrators

Business Analysis Career Path

This pathway analyzes various types of data and based on the analyses make recommendations on how the business should proceed in order to best fulfill its goals.

Pathways

- Financial analysts
- Management analysts
- Consultants

Business Financial Management and Accounting Career Path

This pathway creates and uses the accounting systems that enable a business to keep track of all the profits, losses and expenses. The pathway is responsible for highly confidential financial information.

Pathway

- Accountants
- Auditors

Human Resources Career Path

This pathway is responsible for the hiring and management of employees. The pathway includes interviews of new applicants, planning and executing employee training and development programs, mediating matters of workplace conflict, and ensuring that a business complies with all current labor laws.

Pathway

- Event planners
- Executive recruiters

Management Career Path

This pathway deals with the need for and hiring of employees, monitoring their performance and work with other departments and managers to ensure the overall success of business.

Pathway

- Business managers

- Risk managers
- Human Resources (HR)

Marketing Career Path

This pathway involves extensive research of current market trends and strategies by companies. The pathway is responsible for business communications and ensuring that employees are up-to-date on the latest achievements of business and undertakings among other things.

Pathway

- Marketing researchers
- Media relations specialists
- Public relations specialists



SAMPLE REPORT

Your **Dmystifi career profile** includes things related to enforcement of laws and protection of public. There are four career pathways in this cluster. Each pathway has unique set of skills and competencies.

Correction Services

This pathway deals with individuals who have been arrested, convicted of a crime and sentenced to serve time in jail.

This pathway is responsible for protection of public including treatment, education and the employment of people who are reintegrated.

Pathways

- Judges and Magistrates
- Social workers
- Probation officers and Correctional treatment specialist

Emergency and Fire Management services

This pathway involves protecting the public against crisis or dangerous situations.

Pathways

- Emergency medical technicians and paramedics
- Fire investigators

Law Enforcement Services

This pathway involves investigation of crimes and accidents, enforcements of laws, presentation of evidence in court and serving legal documents for the courts.

Pathways

- Criminal investigators
- Forensic science technicians
- Immigration inspectors

Legal Services

This pathway deals with providing legal services to society in several different methods.

Pathways

- Lawyers
- Paralegals and Legal Assistants
- Arbitrators, Mediators and Conciliators

Your **Dmystifi career profile** includes everything related to management and counseling.

There are three career pathways in this cluster. Each pathway has unique set of skills and competencies.

Administration and Administrative Support Career Path

This pathway works for schools, colleges and universities. The pathway is responsible for implementing discipline when people tend to violate those rules.

Pathway

- College administrators
- Research assistants
- School administrators

Professional Support Services Career Path

This pathway deals with testing, counseling and support to students, educators and parents. The pathway is either responsible for diagnosing or recommending a therapy to student for a certain disability or administering skills assessment to help students to decide their career path.

Pathway

- Guidance counselors
- School psychologists
- Speech-language pathologists

Teaching / Training Career Path

This pathway includes teachers, professors and support staff who provide instruction and training to students.

Pathway

- Elementary school teachers
- Secondary school teachers
- Special education teachers

Thank you

Priyanka Marwah

Priyanka Marwah
Chief Mentor & Head
Personality Analysis & Career Development

This document contains proprietary materials, trade secrets and otherwise confidential information owned by Schoofi Software Solutions Private Limited. Access to and use of the materials and information is strictly limited and controlled by Schoofi Software Solutions Pvt Ltd. This document may not be copied, distributed, or otherwise disclosed outside of Schoofi Software Solutions Pvt Ltd or its affiliates except under appropriate precautions to maintain the confidentiality hereof. It is made available for evaluation purposes only and may not be used in any way not expressly authorized by Schoofi Software Solutions Pvt Ltd.



SAMPLE REPORT

	www.dmystifi.com
	team@dmystifi.com
	123456789